

Visitor attractions on the route.



Abbotsford House
Discover Abbotsford, the home of Sir Walter Scott; one of Scotland's most fascinating places. Explore the historic house and discover a treasure trove of intriguing objects and unusual artefacts which inspired Scott's greatest poems and novels. Learn about Scott's life and achievements in the exhibition, browse the gift shop, dine in style in the restaurant, or simply relax and unwind as you wander through the beautiful formal gardens and tranquil woodlands. 01896 752043. www.scottsabbotsford.com



Melrose Abbey
Melrose Abbey founded by King David in 1136 is a magnificent ruin on a grand scale set within the stunning market town of Melrose. The Abbey is famous as the burial place of Robert the Bruce's heart and is open to visitors throughout the year. Visitors can also visit a small museum housing a display of artefacts found within the Abbey. 01896 822 562.



Scott's View
Reputed to be a favourite place for Sir Walter Scott. According to a popular story, Sir Walter Scott stopped at this point so often on the way to his home at Abbotsford, that his horses would halt without command. After his death in 1832, his funeral cortège passed this way en route to his burial at Dryburgh Abbey, and his horses stopped here to allow their master a last look at the Borders landscape and the Eildon Hills.

BORDER WEAVER

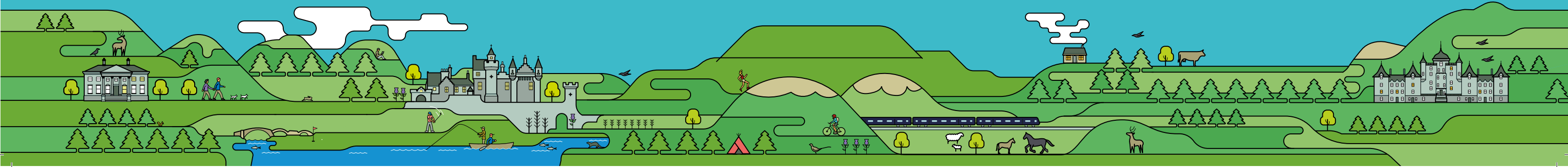
HOP-ON HOP-OFF BUS SERVICE

Linking the Borders Railway with our communities and visitor attractions.

Starts Sunday 6 September



ALL DAY
HOP-ON HOP-OFF
.....
ADULT £5.00
CHILD £2.50



LANC Artwork			
Client: Scottish Borders Council	Doc: 1-00101484.002 SBC Borders Railway Timetable Leaflet A5 AW		
Project: Borders Railway	Size: (148)mm x (210)mm	A/C: Gail	AW: RB
CMYK	Date: 31.08.15	Version: 2	

Service 964
Weekday timetable

Newtown St Boswells – Tweedbank or Galashiels
via Bowden, Melrose, Gattonside, Abbotsford House

Mondays to Fridays until 30th November 2015 and from 1st March 2016

Newtown, Melbourne Place	0900	0950	1200	1400
Bowden	0905	0955	1205
Melrose, Square	0914	1004	1214	1407
Darnick	0918	1008	1218	1411
Gattonside	1014
Tweedbank, Railway Station	0921	1023	1225
Abbotsford House Car Park	1028	1230	1416
Galashiels, Interchange	1038	1240	1426

Mondays to Fridays until 30th November 2015 and from 1st March 2016

Galashiels, Interchange	1045	1245	1430
Currie Road, Asda	1047	1247	1432
Tweedbank, Railway Station	0925	1055	1255
Abbotsford House Car Park	1100	1300	1440
Gattonside	1306
Darnick	0928	1105	1311	1445
Melrose, Buccleuch Street	0932	1109	1315	1449
Bowden	0940	1117	1323	1457
Newtown, Melbourne Place	0945	1122	1328	1502

BORDER WEAVER

Mondays to Fridays from 1st December 2015 until 29th February 2016

Newtown, Melbourne Place	0900	0950	1200	1407
Bowden	0905	0955	1205
Melrose, Square	0914	1004	1214	1414
Darnick	0918	1008	1218	1418
Gattonside	1014
Tweedbank, Railway Station	0921	1023	1225	1421
Galashiels, Interchange	1033	1235

Mondays to Fridays from 1st December 2015 until 29th February 2016

Galashiels, Interchange	1045	1245
Currie Road, Asda	1047	1247
Tweedbank, Railway Station	0925	1055	1255	1425
Gattonside	1301
Darnick	0928	1058	1306	1428
Melrose, Buccleuch Street	0932	1102	1310	1432
Bowden	0940	1110	1318	1440
Newtown, Melbourne Place	0945	1115	1323	1445

Operator: Scottish Borders Council

Service 65
Weekend timetable

Galashiels – Tweedbank – Abbotsford House – Melrose –
Dryburgh Abbey – Scott’s View – Melrose – Galashiels

Saturdays until 28th November 2015 and from 5th March 2016

Galashiels, Interchange	1020	1220	1420	1600
Tweedbank, Railway Station	1030	1230	1430	1610
Abbotsford House	1035	1235	1435	1615
Melrose, Buccleuch Street	1041	1241	1441	1621
Bowden	1050	1250	1450	1630
Newtown, Melbourne Place	1053	1253	1453	1633
St Boswells, Bus Stance	1057	1257	1457	1637
Dryburgh Abbey, Car Park	1105	1305	1505	1645
Scott’s View	arr	1111	1311	1511
Scott’s View	dep	1115	1315	1515
Gattonside	1124	1324	1524	1704
Melrose, Square	1130	1330	1530	1710
Abbotsford House	1135	1335	1535	1715
Galashiels, Interchange	1145	1345	1545	1725

Operator: First Borders

Fare information:
Single fares are available between all points.
One-Ticket and Scotland-wide free bus travel passes are valid between all points.
Young Persons’ Bus Concession Cards valid.

Sundays until 29th November 2015 and from 6th March 2016

Galashiels, Interchange	1105	1305	1505
Tweedbank, Railway Station	1115	1315	1515
Abbotsford House	1120	1320	1520
Melrose, Buccleuch Street	1126	1326	1526
Bowden	1135	1335	1535
Newtown, Melbourne Place	1138	1338	1538
St Boswells, Bus Stance	1142	1342	1542
Dryburgh Abbey, Car Park	1150	1350	1550
Scott’s View	arr	1156	1356
Scott’s View	dep	1200	1400
Gattonside	1209	1409	1609
Melrose, Square	1215	1415	1615
Abbotsford House	1220	1420	1620
Galashiels, Interchange	1230	1430	1630

BORDER WEAVER